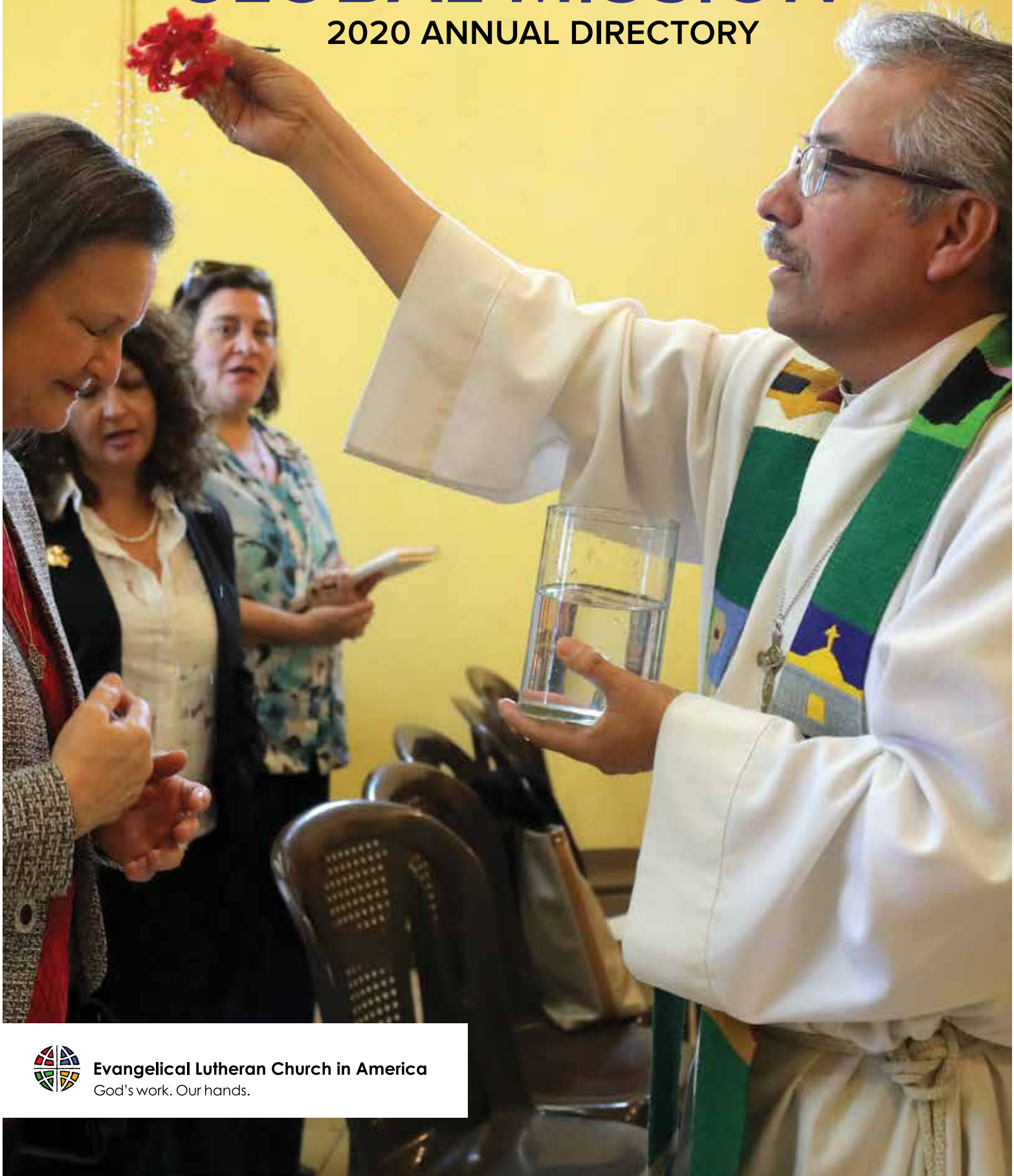


Journey with **GLOBAL MISSION** 2020 ANNUAL DIRECTORY



Evangelical Lutheran Church in America
God's work. Our hands.

2020 ANNUAL DIRECTORY

of the Evangelical Lutheran Church in America

CONTENTS

REFLECTING ON ACCOMPANIMENT	3
MISSIONARIES	4
YOUNG ADULTS IN GLOBAL MISSION	5
ELCA WORLD HUNGER	6
LUTHERAN DISASTER RESPONSE	6
INTERNATIONAL LEADERS PROGRAM	7
INTERNATIONAL WOMEN LEADERS	7
EVANGELISM AND OUTREACH WORK	7
AFRICA	8
ASIA AND THE PACIFIC	12
GLOCAL MUSICIAN EDUCATORS	15
EUROPE & MIDDLE EAST AND NORTH AFRICA	16
LATIN AMERICA AND THE CARIBBEAN	20
HOW TO GIVE	23
COMPANION SYNOD RELATIONSHIPS	24
GIVING CODES	25

HOW TO SERVE

MISSIONARIES

Global missionary positions can vary based on the needs discerned by global companions and the ELCA. To view current open positions and apply, visit [ELCA.org/GlobalService](https://www.elca.org/GlobalService) and click “View Opportunities.”

YOUNG ADULTS IN GLOBAL MISSION (YAGM)

Applications for YAGM are open until Feb. 15, 2020, for service starting in August 2020. The application window for the following year will be Nov. 1, 2020, to Jan. 15, 2021. To apply, visit [ELCA.org/YAGM](https://www.elca.org/YAGM) and click “Apply Now.”

Cover: The Rev. José Luís Marroquín (right) blesses the Rev. Susan Schnelle (left) at El Divino Salvador del Mundo in Guatemala.

“As the Father has sent me, so I send you” (John 20:21).

Our God is a missionary God. The word “mission” was said to describe the work of the Trinity in the world: restoring community. For that purpose, God revealed God’s self in Jesus Christ. In him we have seen the “fullness of God,” participating in the life full and abundant that is a sign of the kingdom. That mission continues in our days.

This text from John’s Gospel has been used to emphasize the missionary character of Jesus’ church. We participate in being sent into the world proclaiming the good news of the gospel. “As the Father has sent me ... ” tells us about the manner in which we participate in this mission: in the same way Jesus did, that is, in servant service. We participate in Jesus’ project for life, for humankind. The mission has already been set for us.

The ELCA Constitution describes us as “called, gathered, and sent to proclaim God’s creative, redeeming, and sanctifying activity in the world.” In the Gospel According to John we heed the command of Jesus: “As the Father has sent me, so I send you.” Sentness (the act of being sent) is the essence of being church, connecting us to the mission and to the one who sends. We are sent not only to engage in a task (the doing of mission) but as an expression of our life together as members of the body of Christ (the being in mission).

Mission rooted in relationship means growth – for everyone involved. Together, in response to God’s liberating grace, we listen, learn and deepen our understanding of and love for one another. As we recognize, affirm and receive one another’s gifts, we become invested in God’s mission. These investments are at the center of global mission.

The ELCA organizes its global engagement around the theology and practice of accompaniment, walking together with Lutheran, ecumenical and interfaith siblings around the world. We are a church that believes God is calling us into the world – together.

FIVE CORE ACCOMPANIMENT VALUES GUIDE US:

- | | |
|------------------------|--|
| MUTUALITY: | A commitment to relationships that receive one another’s gifts and expertise. |
| INCLUSIVITY: | A commitment to relationships that address exclusion in communities. |
| VULNERABILITY: | A commitment to relationships that are open to Christ’s transformation and reconciliation. |
| EMPOWERMENT: | A commitment to relationships that build one another’s strengths and capacity for God’s mission. |
| SUSTAINABILITY: | A commitment to relationships of accountability that steward God’s given gifts for the present and future. |

As we journey together in this venture, we are assured of God’s companionship and guidance: “O God, you have called your servant to ventures of which we cannot see the ending, by paths as yet untrodden, through perils unknown. Give us faith to go out with good courage, not knowing where we go, but only that your hand is leading us and your love supporting us, through Jesus Christ our Lord” (ELW, p. 317). Amen!

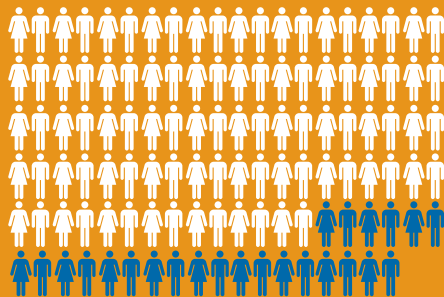


MISSIONARIES

Invited by companion churches; sent by the ELCA.

As pastor of Nairobi International Lutheran Congregation of the Kenya Evangelical Lutheran Church, the Rev. Alex LaChapelle ministers to members from Kenya and other African countries, Europe, North America and the Indian subcontinent.

HOW MANY?



118 missionary households including **24 new missionaries** in 2019

WHERE?



45 countries around the world

WHAT?

EDUCATION



39 missionaries serve as teachers, professors or trainers.

ADMINISTRATION



27 missionaries serve as representatives, program facilitators or communicators.

PARISH MINISTRY



30 missionaries serve as pastors, pastoral interns or worship assistants.

YAGM



11 missionaries serve as coordinators for Young Adults in Global Mission.

HEALTH



7 missionaries serve as doctors or health care coordinators.



YOUNG ADULTS IN GLOBAL MISSION

A transformative year of being, serving and growing in faith.

“New name, new home, new beginnings,” says Young Adult in Global Mission Charlie Williams, or Aïda Ndiaye, as her host mother calls her. Assigned to the Department of Community Development in the Lutheran Church of Senegal, she is learning about sustainable development by participating in the Mbam community project gardens led by Diegane Ndong. “I am surrounded by a community of men, women and youth passionate about their work and always willing to share their knowledge with me,” she says.

Diegane Ndong (left), Mbam community project gardens leader, with Charlie Williams (right), a Young Adult in Global Mission in Senegal.

WHO?



Young adults 21 to 29 with a connection to the ELCA

HOW MANY?



60 volunteers serving in 2019-20

WHERE?



10 programs encompassing 12 countries

HISTORY: 1,000+ young adults have served with YAGM since it began in 1999.

IMPACT: 30% of YAGM alumni go into seminary; 50% work in nonprofit organizations; 60% get involved in advocacy and justice-related work.

ELCA WORLD HUNGER

As members of the ELCA, we believe God is calling us into the world – together. ELCA World Hunger is our church’s ministry working to break the cycle of hunger and poverty. Through Global Mission’s international programming, gifts to ELCA World Hunger were at work in over 60 countries in 2018.

The world provides enough food for all, but more than 800 million people around the world face chronic hunger. We believe in a God of abundance, so as a church, we live out our call in baptism to strive for a just world where all are fed. Internationally, this includes supporting the transformative ministries of our companion churches and partners around the world.

Eswatini/Swaziland

By growing spinach and tomatoes to feed her family, Mary Zwane is helping make her rural community of Luggedzeni less vulnerable to HIV and AIDS. With funds from ELCA World Hunger, the Evangelical Lutheran Church in Southern Africa–Eastern Diocese supplied seeds and training to 482 gardeners, indirectly feeding almost 3,000 people. The project’s objective is to improve the quality of life in three rural communities for orphans, vulnerable children, the elderly, people living with HIV and people living with disabilities.



Mrs. Maziya (right), treasurer of the Eastern Diocese of the Evangelical Lutheran Church in Southern Africa, purchases spinach from Mary Zwane (left).



WATER & SANITATION



EDUCATION & TRAINING



AGRICULTURE & NUTRITION



INCOME & SAVINGS



HEALTH

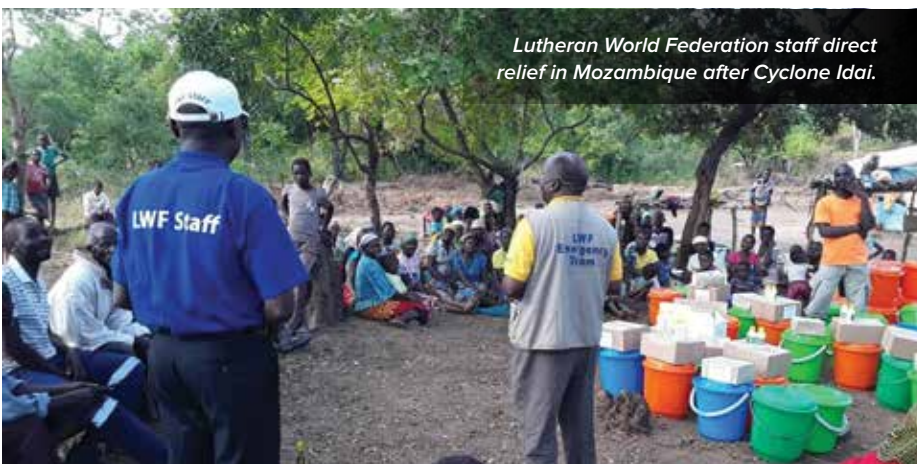


PEACE, JUSTICE AND HUMAN RIGHTS



ADVOCACY AND COMMUNITY ORGANIZING

To learn more, visit ELCA.org/hunger.



Lutheran World Federation staff direct relief in Mozambique after Cyclone Idai.

LUTHERAN DISASTER RESPONSE

Lutheran Disaster Response brings God’s hope, healing and renewal to people whose lives have been disrupted by disasters in the United States and around the world. When the dust settles and the headlines change, we stay to provide ongoing assistance to those in need.

Mozambique/Zimbabwe

In March 2019, Cyclone Idai ravaged Mozambique, Zimbabwe and Malawi, causing more than 1,300 deaths and \$2.2 billion in damages. “I saw rocks and muddy waters coming into our room, and soon I was half-buried under rubble,” said Enia, who lost her husband, home and possessions in Zimbabwe’s Chimanimani district. Funds from Lutheran Disaster Response are helping the Lutheran World Federation and other partners walk alongside people such as Enia, offering food, shelter and psychosocial support and strengthening early-warning systems. Thanks to them, said Enia, “I am able to survive.”

To learn more, visit ELCA.org/disaster.

INTERNATIONAL LEADERS PROGRAM

The International Leaders Program partners with companions to develop strong and effective leaders. Through academic scholarships, engagement in gender justice, and short-term leadership experiences, the International Leaders Program is forming leaders for both church and society.

IMPACT

- Over 1,000 individuals have earned scholarships for education and training, including 162 scholars who received support in 2019.
- 58 companion churches and institutions are represented.
- 64% of scholarship recipients are women.



International Women Leaders scholar Sthela Gun Holly Hanitrinirina, a member of the Malagasy Lutheran Church, graduated from Luther College in 2019.

INTERNATIONAL WOMEN LEADERS

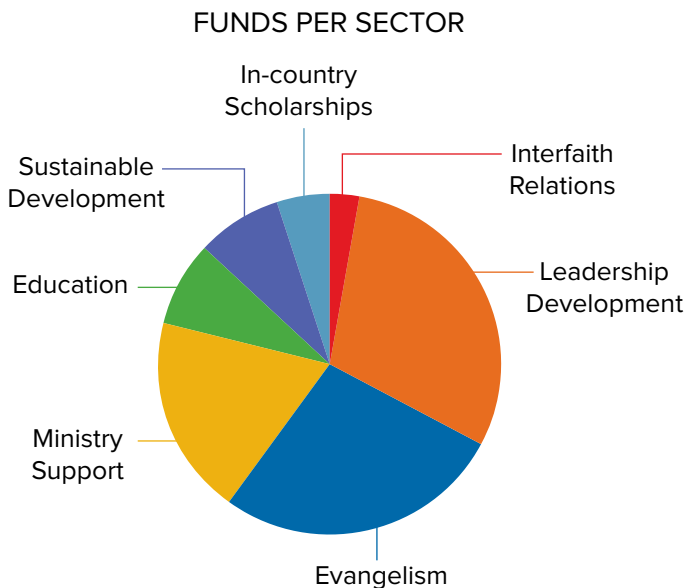
Alongside the global Lutheran community, the ELCA is engaging in a strategic emphasis on equipping women leaders in the life and development of the church and society. These emerging leaders study at ELCA colleges and universities, ELCA seminaries, and other institutions around the world:

- Since 2015, 34 scholars have studied at ELCA colleges and universities and about 10 at other institutions around the world – including 28 who received support in 2019.
- 22 countries are represented.
- 134 women from 40 countries have participated in leadership seminars focused on gender justice.

EVANGELISM AND OUTREACH WORK

BY THE NUMBERS

Your contributions to Mission Support uplift many ministries that help the church grow and thrive in the United States and around the world. Mission Support also funds Global Mission’s programs, including missionaries, Mission Formation, companion synods and the International Leaders Program. See the breakdown of funding for these Global Mission grants below.



FY19 GLOBAL MISSION GRANTS THROUGH MISSION SUPPORT

Leadership Development:	\$619,400
Evangelism:	\$562,710
Ministry Support:	\$385,365
Education:	\$172,550
Sustainable Development:	\$170,190
In-country Scholarships:	\$98,605
Interfaith Relations:	\$65,800

AFRICA

A SNAPSHOT OF IMPACT

- **Twenty-five missionaries** served full-time throughout Africa in 2019.
- Nearly **\$1.9 million funded** medical and health programming through ELCA World Hunger in Fiscal Year 2019.

Kenya

The beautiful, multiethnic Kenyan coast is proud of its history and cultures – and also has communities prone to conflict and radicalization. Through its peace-building program, the Kenya Evangelical Lutheran Church helps young people understand the causes of violent extremism and gain strategies for community de-radicalization. Interfaith forums for civic engagement plus dialogue, tolerance and appreciating unity in diversity give communities tools they need to coexist. Sports, media campaigns and talent shows are unique ways participants advocate for peace. One program leader was recently recognized by the Kenyan government for his peace-building work.

The Kenya Evangelical Lutheran Church's peace-building program equips young people with tools to coexist in multicultural, multireligious communities.



Nigeria

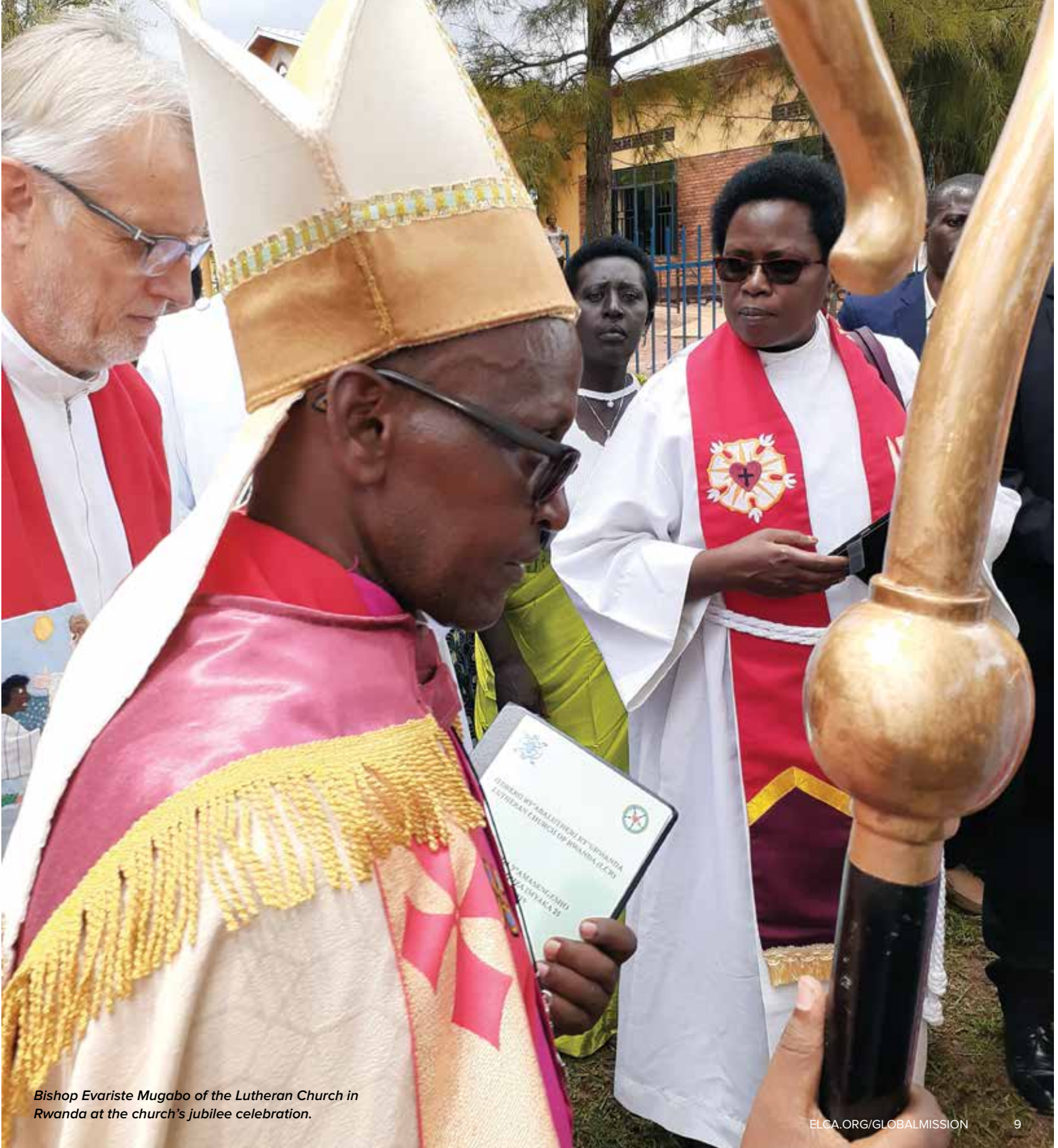
Kendrick Hall is learning ministry from experts in Garki, Nigeria, where he is a Horizon intern. The Luther Seminary student and former ELCA Hunger Justice Advocate has preached and led prayers of thanksgiving during an all-night prayer vigil and observed how the Lutheran Church of Christ in Nigeria (LCCN) elected leadership at church, district, division and national levels. Participating in the church community helps him see how Nigerian Lutherans “truly lean on one another to have an abundant and fruitful ministry, not only as a church but as an entire diocese.”

Kendrick Hall (middle), a Luther Seminary student doing a Horizon internship, with members of the Lutheran Church of Christ in Nigeria.



Rwanda

Twenty-five years after Rwandan refugees in Tanzania started the Lutheran Church in Rwanda (LCR), Bishop Evariste Mugabo welcomed visitors from all over the world to the church's jubilee. Members of the ELCA's Sierra Pacific Synod (companion to the LCR) and representatives from the Lutheran World Federation joined the celebration, worshipping together and visiting Kirehe Parish, site of the first LCR worship service. Bishop Mugabo and guests also helped build the foundations of new homes in Kayonza District while participating in Umuganda, Rwanda's monthly community workday.



Bishop Evariste Mugabo of the Lutheran Church in Rwanda at the church's jubilee celebration.

CAMEROON



REV. DR. ELISABETH JOHNSON
Theological education



ANNE AND WILLIE LANGDJI
Regional representatives for Madagascar, West and Central Africa

KENYA



REV. ALEX LACHAPELLE
Parish ministry

LIBERIA



REV. BRIAN PALMER
Theology instructor



REV. LINDA JOHNSON SEYENKULO
Curriculum adviser and trainer

MADAGASCAR



BRYCE BOMMERSBACH
YAGM



KRISTIAN CARLSON
YAGM

MADAGASCAR



BRAD GIORDANO
YAGM



JAYME KOKKONEN
YAGM



KENDALL KOON
YAGM



REV. KIRSTEN LADERACH
YAGM country coordinator



BETHANY LILLIE
YAGM



REV. LANCELOT THEMBA AND KWENA MKHABELA
Regional representative for Madagascar, West and Central Africa



ALEXIS OLSON
YAGM

NIGERIA



KENDRICK HALL
Horizon intern



MARIE HYNEK
YAGM



FRIEDA MOTTONEN
YAGM



REV. JANELLE NEUBAUER
YAGM country coordinator



EMILY RONSBERG
YAGM



ANTIONETTE SMALLWOOD
YAGM



JACKIE STENBERG
YAGM

RWANDA

RWANDA

SENEGAL



ALEX THESHIP-ROSALES
YAGM



REV. KRISTIN ENGSTROM
YAGM country coordinator



CONNOR HORAN
YAGM



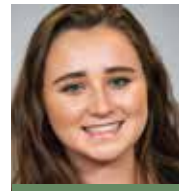
MICHAEL (COLLINS) PRITCHETT
YAGM



SARAH WEAVER
YAGM



CHARLIE WILLIAMS
YAGM



KAITLYN ZIEGELMAIER
YAGM

SOUTH AFRICA SOUTH SUDAN



REV. PHILIP AND LOU-MARIE KNUTSON
Regional representative for Southern Africa



REV. MAWIEN ARIIK
Evangelism



REV. WAL REAT
Evangelism

TANZANIA



DR. STEVEN AND BETHANY FRIBERG
Health care



DR. MARK AND LINDA JACOBSON
Health care



DAVID (DAUDI) AND KELLEN MSSEEMMAA
Regional representative for East Africa



REV. DR. CYNTHIA HOLDER RICH AND REV. DR. MARK RICH
Theological education

TANZANIA



DR. STEPHEN AND JODI SWANSON
Health care



DEACON APRIL TROUT
Program coordinator

ZAMBIA



REV. DEBORAH AND JOSEPH TROESTER
Leadership development

NOT PICTURED

NIGERIA

DORTHEA HUSTOFT-HAMMAN
Teacher

TANZANIA

ROBERT KASWORM
Health care administration

ZIMBABWE

DR. AMBROSE MOYO
Regional consultant

ASIA AND THE PACIFIC

A SNAPSHOT OF IMPACT

- Over **25 missionaries** were present throughout Asia and the Pacific in 2019.
- Nearly **\$1.5 million in grants supported** sustainable development throughout the region in Fiscal Year 2019.



Li Wan-Rong (right) and spouse He Xiue now have about 50 beehives thanks to support from the Yulong County Christian Council's community development efforts in Yunnan Province.

China

Beekeeping started as a hobby for Li Wan-Rong and spouse He Xiue. A seer in the ethnic Pumi traditional religion, Li “heard of this one God, a universal God. I just wanted one God with whom I could communicate. And that’s how I came to know God and Jesus.” Through the community development efforts of Yulong County Christian Council in Yunnan Province, funded by ELCA World Hunger, Li and He now have some 50 beehives. As their income has improved, they have inspired others in the community to engage in similar sustainable projects.

India

The Bible Women of the Andhra Evangelical Lutheran Church use creative storytelling methods to bring the story of Jesus and the Bible to villages in the state of Andhra Pradesh. Telling the story one-on-one is helpful in reaching women who may not be able to read. Combining drama, song and dance brings Bible stories alive so they are even more relevant to people hearing these stories for the first time. Traditional storytelling plus building friendships over years of visiting villages and families leads many to the Christian faith.



The Bible Women of the Andhra Evangelical Lutheran Church find creative ways to tell Bible stories in the state of Andhra Pradesh, India. Photo: Y. Franklin Ishida / ELCA

Papua New Guinea

After retiring, John Wat started building a new home for himself, his wife and their teenage son, but he was unable to complete it. In an irrigation project of the Evangelical Lutheran Church in Papua New Guinea—Lutheran Development Services, he learned to cultivate onions, and with other participants he formed the Egem Bulb Onion Group to grow and market their crop. Six harvests later, he has completed his home, has purchased electrical appliances and a solar-lighting kit, and provides for daily needs.



John Wat has now finished building his new home (pictured here under construction) in Papua New Guinea.

AUSTRALIA



REV. KIM CRAWFORD AND REV. HENRY MARTINEZ
YAGM country coordinators



MACY KENNEDY
YAGM



JOSEPH KIEL
YAGM



KATIE LINTICUM
YAGM



EMMA MAIER
YAGM

CAMBODIA



REV. PHILLIP BAKER
Regional representative

HONG KONG



MATTHEW HAFAR
ESL instructor

INDIA



REV. CHANDRAN PAUL MARTIN
Regional representative

JAPAN



REV. HITOSHI AND SATOKO ADACHI
Parish ministry



PATRICK AND JACKIE BENCKE
ESL teacher, music teacher



ERICA BRYER
ESL teacher



JORDAN COLLINS-BROWN
ESL teacher



JESSICA HILL
ESL teacher

JAPAN



JENNIFER JARVIE
ESL teacher



KATIE NARUM MIYAMOTO
ESL teacher



ERIN RYAN
ESL teacher



REV. DR. JAMES AND CAROL SACK
Theological education, music ministry



SPENCER WENTLAND
ESL teacher



REV. DR. SARAH AND DR. ANDREW WILSON
Parish ministry, theological education



HAILEY BRENDEN
Communications

NEPAL

SINGAPORE



REV. DR. JEFFREY TRUSCOTT
Theological education

NOT PICTURED

INDIA

Timothy Melvyn
Special consultant

SOUTH KOREA

REV. SUK YEON LEE (JANG)
University education, counseling

GLOCAL MUSICIAN EDUCATORS



The Glocal Musician Educators program was formed out of the ELCA Global Mission unit to provide education and worship for gatherings hosted by congregations and other Christian communities throughout North America and the Caribbean. The intentionally diverse group includes musicians from many countries, denominations and cultures. Guided by the values of accompaniment, the program strives to embody what it means to be glocal: simultaneously global and local.

In 2019, Glocal Musician Educators partnered with synods and congregations at 14 events in 11 synods to assist ELCA members in experiencing diverse worship and receiving music from our global companions. Glocal event workshops and learning tracks sought to make a local connection to participants' ministries and everyday lives.

Interested in hosting a Glocal event? Contact Kevin Jacobson, interim director of Mission Formation, at kevin.jacobson@elca.org.

Learn more: [ELCA.org/Glocal](https://elca.org/Glocal)

EUROPE & MIDDLE EAST AND NORTH AFRICA

A SNAPSHOT OF IMPACT

- The ELCA **supports 13 church bodies** in a postcommunist era throughout Europe.
- **Eleven new synods** joined the Peace Not Walls network in 2019.
- Over **80% of ELCA World Hunger funds awarded** in the MENA region were designated toward peace, justice and reconciliation programs in Fiscal Year 2019.



The Rev. Dr. Mari Thorkelson (left) at the American Church in Berlin.

Germany

At the American Church in Berlin, the English language and Christ's table unite people from around the world. ACB members come from more than 17 Christian denominations and 30 nations. With the Rev. Dr. Mari Thorkelson and ELCA pastoral interns, members offer hospitality and welcome to strangers in Berlin, provide food for the hungry every Friday and offer sanctuary to young people starting careers. "ACB is my first place to discover social contact with people from all around the world," says one young member. "It feels like God's good kingdom on earth."





The staff of Augusta Victoria Hospital in East Jerusalem, Palestine, provides critically needed medical services. Photo: Augusta Victoria Hospital

Palestine

Every three weeks, Azza, a 24-year-old wife and mother with colon cancer, travels from Gaza to East Jerusalem for chemotherapy at Augusta Victoria Hospital. The hospital's skilled staff provides the only radiation and chemotherapy in the Palestinian territories and the only pediatric kidney dialysis in the West Bank and Gaza. A critical source of care for patients with advanced care needs, Augusta Victoria was founded in Jerusalem in 1948 and is operated by the Lutheran World Federation.



Russia

Students, diplomats and others from African countries gather for worship at the French-speaking Lutheran ministry of the Evangelical Lutheran Church in European Russia in Moscow. Many young members from Madagascar participate in the gospel choir, led by Ms. Fara Rakoto, president of the youth group.

Well known in Moscow, the choir is regularly invited to city events and participates in evangelization tours to other Lutheran congregations. "Our congregation, with its openhearted music, is a real light and a little treasure here in Russia," says Pastor Lena Bondarenko.

The choir leads worship at the French-speaking Lutheran ministry of the Evangelical Lutheran Church in European Russia in Moscow, Russia.

DENMARK



REV. TIMOTHY AND MARYANN STEWART
Parish ministry

EGYPT



REV. CHRISTIE MANISTO AND STEVEN SAARI
Parish ministry

GERMANY



REV. MICHAEL PARKER
Theological education



REV. VIKING AND MARISSA DIETRICH
Regional representatives

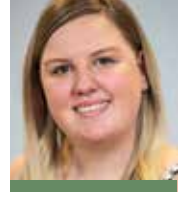


RACHEL JOHNSON
Horizon intern



REV. DR. ROBERT AND KATHRYN MOORE
Director, ELCA Wittenberg Center

HUNGARY & SERBIA



MARY CORKERY
YAGM

HUNGARY & SERBIA



MAREN CORLISS
YAGM



REV. ZACHARY COURTER AND REV. RACHEL ESKESEN
YAGM country coordinators



ZACHARY CROONQUIST
YAGM



ANNA (ALI) EASTHAM
YAGM



KENDRA HERNANDEZ
YAGM



ADAM KNOTT
YAGM



NATHAN OVERTON
YAGM

HUNGARY & SERBIA



ALEXIS STEIG
YAGM



REV. GABI AND REV. MEGHAN AELABOUNI
YAGM country coordinators



REV. CARRIE BALLENGER
Parish ministry



MADDI FROILAND
YAGM



SARAH GAISER
YAGM



MEGAN MONG
YAGM



LYNDSAY MONSEN
YAGM

ISRAEL/PALESTINE

ISRAEL/PALESTINE



ANNA SKARE
YAGM



OLIVIA SLAGLE
YAGM

RUSSIA



REV. BRADN BUERKLE
Pastor

SLOVAKIA



STEPHANIE BLACK
Teacher



RACHEL BOSSUYT
Teacher



KELSEY FAUSER
Horizon intern



MEGAN FREUDENBERG
Teacher

SLOVAKIA



JONATHAN KENT
Teacher



JENNIFER NORBERG
Teacher



EDWARD PATRICKS
Teacher



CALEB RANUM
Teacher



CAROL SCHWANTES
Teacher



NAOMI AND NICHOLAS SVEHOLM
Education coordinator, teacher



REV. KYLE AND ANNA SVENNUNGENSEN
Parish ministry

UNITED KINGDOM



ANNA FOX
YAGM



CAITLIN FREEMAN
YAGM



LEE HANSON
YAGM



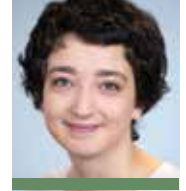
RYAN LAWRENCE
YAGM



MADISON MCCABE
YAGM



SYDNE NARUM
YAGM



NICHOLE SCHLOESSER-BECHT
YAGM

UNITED KINGDOM



EMILY SHANE
YAGM



MICHAEL WILLIAMS
YAGM

NOT PICTURED

AUSTRIA

REV. AMANDA OLESON
Chaplain

BELGIUM

REV. KATIE OSWEILER
Parish ministry

GERMANY

REV. DR. MARI THORKELSON
Parish ministry

NORWAY

REV. INGEBJORG LAUGALAND
Parish ministry

POLAND

MONICA MEYER
Teacher

SLOVAKIA

JOHN ROGERS
Teacher

SUE STREKAL
Teacher

SWEDEN

REV. ANNA BALLAN
Parish ministry

SWITZERLAND

ANDREW WILLIS
Parish ministry

LATIN AMERICA AND THE CARIBBEAN

A SNAPSHOT OF IMPACT

- Over **\$700,000 funded project grants** to support leadership development in the Latin America and Caribbean region in Fiscal Year 2019.
- Over **\$600,000 supported the global migration engagement** of companion churches through AMMPARO.



The San Pedro congregation of the United Evangelical Lutheran Church of Argentina and Uruguay (IELU) created a shelter to welcome migrants.

Argentina/Uruguay

More than 130,000 Venezuelans have migrated to Argentina to build new lives. As migrants arrived in the northeastern town of Posadas, the San Pedro congregation of the United Evangelical Lutheran Church of Argentina and Uruguay (IELU) felt called to welcome and serve. It turned a downtown property into a shelter and provides pastoral care and legal accompaniment for migrants in several Argentine towns. Venezuelans living in the shelter have started Arepa Viva, a project that generates income for themselves and feeds other migrants.



Honduras

“As returned migrants, we too have the right to progress in our country,” reads the back of Carlos Alberto’s shirt. The Return With Hope & Dignity project in Honduras, part of Accompanying Migrant Minors with Protection, Advocacy, Representation and Opportunities (AMMPARO), helps youth such as Carlos Alberto rebuild their lives after being deported from the United States. Vocational training and seed capital helped him open a barbershop. Educational workshops made him aware of his rights. Now he and other returned migrants are advocating on behalf of other Honduran youth so they won’t have to emigrate.

Carlos Alberto, a returned migrant, opened a barbershop in Honduras with the vocational training and seed capital he received from the Return With Hope & Dignity project.



The Rev. Stephen Deal, the ELCA regional representative for Central America, and the Rev. Karen Castillo, president of the Augustinian Lutheran Church of Guatemala.

Costa Rica

The Rev. Stephen Deal has served as ELCA regional representative for Central America since 2003. Working closely with regional Lutheran leaders, he identifies ways for ELCA synods, congregations and members to accompany our companion churches. Stephen helps strengthen companion churches' pastoral leadership training programs and serves as a teaching pastor. He's an asset as these churches develop pastoral leadership for effective ministry in contexts of economic poverty, social violence and climate vulnerability.



Guatemala

The theme “Weaving Links in Mission” brought together 23 ELCA synods and 15 companion churches at the 2019 Latin America and the Caribbean Companion Synods consultation in Antigua, Guatemala. Delving deeply into topics such as migration and gender justice, the 105 participants learned from one another and strengthened their ability to collaborate on ministry.

The Rev. Atahualpa Hernandez, bishop president of the Evangelical Lutheran Church of Colombia, weaves a banner to represent his church's companion synod relationship.

ARGENTINA & URUGUAY



BENJAMIN DAVID
YAGM



ALBERTO (GUSTAVO) DRIAU
Regional representative



CHRISTOPHER AND COURTNEY GARZA
YAGM



JESSICA GEROUX
YAGM



REBECCA MARTIN
YAGM



RACHEL RINGLABEN
YAGM country coordinator



CASSANDRA SINGH-HUETER
YAGM

ARGENTINA & URUGUAY



ANN EMILIE TJORHOM
YAGM



KAREN ANDERSON
Director of International School for Health Education (EPES)



CHRISTINA JINDRA
Horizon intern



CAROLINE AND JORGE TORRES
Horizon intern



REV. STEPHEN AND MARTA DEAL
Regional representative



DR. REGINA MUSSELMAN DE PÉREZ AND REV. DR. ELISEO PÉREZ-ALVAREZ
Theological education



AMELIA BARKLEY
YAGM

CHILE

COLOMBIA

COSTA RICA

JAMAICA

MEXICO

MEXICO



KARA BARKMAN
YAGM



DEANNA BRACKEN
YAGM



SOPHIE BREEN
YAGM



REV. DAVID AND ALICIA BRONDOS
Theological education



REV. MEGHAN BROWN SAAVEDRA
YAGM country coordinator



CASSIDY DREW
YAGM



SARAH HENNING
YAGM

MEXICO



KATIE HOUSIAUX
YAGM



MICHELLE ROBY
YAGM

NOT PICTURED

COLOMBIA

LINDA GAWTHORNE
Bible translator

NICARAGUA

CLAUDIA LOPEZ ORTEGA
Mission hospitality coordinator

HOW TO GIVE

There are so many ways Global Mission is working alongside our siblings in Christ to build up God's global church. You can join us in these vital ministries in a number of ways, including prayer, creating a covenant and raising money to support the work that is happening around the world.

BECOME A COVENANT CONGREGATION

Deepen your relationship with a missionary through a commitment of prayer, communication and financial support. Covenant congregations receive regular newsletter updates from their missionary and have the opportunity to request a visit during home assignment.

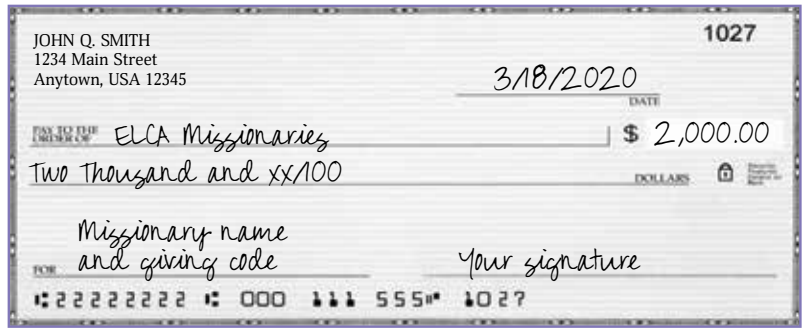
Download the form at [ELCA.org/CovenantForm](https://elca.org/CovenantForm).

Contact globalchurch@elca.org or 800-638-3522, ext. 2820.

GIVE BY CHECK

Make your check out to "ELCA Missionaries" with one of the designation names and codes* in the memo line. Mail your check to:

Evangelical Lutheran Church in America
Gifts Processing Center
P.O. Box 1809
Merrifield, VA 22116-8009



*For a list of designation codes, visit pages 25-27.

GIVE BY CREDIT OR DEBIT CARD

Visit [ELCA.org/MissionaryGiving](https://elca.org/MissionaryGiving) or call 800-638-3522.

GIVE TO AN ENDOWMENT

Make a lasting gift! Contribute to one of Global Mission's endowment funds to help support these ministries for generations to come. Visit [ELCA.org/GlobalGive](https://elca.org/GlobalGive) and select either *ELCA Young Adults in Global Mission Endowment (E272617)* or *ELCA International Women Leaders Endowment Fund (E272671)* from the drop-down menu.

GIVE THROUGH THRIVENT FINANCIAL® Connecting faith & finances for good.®

If you are a Thrivent member, consider supporting Global Mission through your Thrivent Choice Dollars.

MONTHLY

Set up an automatic monthly gift by calling 800-638-3522.

CREATE A LEGACY

An ELCA gift planner can help you plan a legacy gift, such as a bequest, endowment or charitable gift annuity. Contact elcafoundation@elca.org or call 800-638-3522, ext. 2299.

COMPANION SYNOD RELATIONSHIPS

Through accompaniment and the five core values, ELCA and Evangelical Lutheran Church in Canada synods participate in companion synod relationships. These relationships are rooted in mutuality and interdependence. They strengthen the capacity of the synods to engage in evangelical witness and service while encouraging each other to fully embrace the gifts and knowledge of companion churches.

ELCA SYNOD	INTERNATIONAL COMPANION	ELCA SYNOD	INTERNATIONAL COMPANION
1B NORTHWEST WASHINGTON SYNOD	RUSSIA	6E NORTHEASTERN OHIO SYNOD	SOUTH AFRICA
1C SOUTHWESTERN WASHINGTON SYNOD	NAMIBIA	6F SOUTHERN OHIO SYNOD	BRAZIL, GERMANY, KAZAKHSTAN, TANZANIA
1D NORTHWEST INTERMOUNTAIN SYNOD	TANZANIA	7A NEW JERSEY SYNOD	NAMIBIA
1E OREGON SYNOD	POLAND	7B NEW ENGLAND SYNOD	HONDURAS, JORDAN/PALESTINE
1F MONTANA SYNOD	BOLIVIA, SOUTH AFRICA	7C METROPOLITAN NEW YORK SYNOD	TANZANIA
2A SIERRA PACIFIC SYNOD	EL SALVADOR, RWANDA, TAIWAN	7D UPSTATE NEW YORK SYNOD	ZAMBIA, ZIMBABWE
2B SOUTHWEST CALIFORNIA SYNOD	EL SALVADOR, HONG KONG	7E NORTHEASTERN PENNSYLVANIA SYNOD	ARGENTINA/URUGUAY, GERMANY, SLOVENIA, TANZANIA
2C PACIFICA SYNOD	MALAYSIA	7F SOUTHEASTERN PENNSYLVANIA SYNOD	TANZANIA
2D GRAND CANYON SYNOD	SENEGAL	7G SLOVAK ZION SYNOD	SERBIA, SLOVAKIA
2E ROCKY MOUNTAIN SYNOD	MADAGASCAR	8A NORTHWESTERN PENNSYLVANIA SYNOD	GERMANY, TANZANIA
3A WESTERN NORTH DAKOTA SYNOD	CENTRAL AFRICAN REPUBLIC	8B SOUTHWESTERN PENNSYLVANIA SYNOD	MADAGASCAR
3B EASTERN NORTH DAKOTA SYNOD	CENTRAL AFRICAN REPUBLIC	8C ALLEGHENY SYNOD	KENYA
3C SOUTH DAKOTA SYNOD	CAMEROON, NICARAGUA	8D LOWER SUSQUEHANNA SYNOD	TANZANIA
3D NORTHWESTERN MINNESOTA SYNOD	INDIA	8E UPPER SUSQUEHANNA SYNOD	GERMANY, LIBERIA
3E NORTHEASTERN MINNESOTA SYNOD	HONDURAS, INDIA, RUSSIA	8F DELAWARE-MARYLAND SYNOD	ESTONIA, FINLAND, TANZANIA
3F SOUTHWESTERN MINNESOTA SYNOD	SOUTH AFRICA	8G METROPOLITAN WASHINGTON, D.C. SYNOD	EL SALVADOR, NAMIBIA, SLOVAKIA
3G MINNEAPOLIS AREA SYNOD	GERMANY, NIGERIA	8H WEST VIRGINIA-WESTERN MARYLAND SYNOD	MADAGASCAR
3H SAINT PAUL AREA SYNOD	GUATEMALA, TANZANIA	9A VIRGINIA SYNOD	PAPUA NEW GUINEA
3I SOUTHEASTERN MINNESOTA SYNOD	COLOMBIA, SOUTH SUDAN, TANZANIA	9B NORTH CAROLINA SYNOD	COSTA RICA, PAPUA NEW GUINEA
4A NEBRASKA SYNOD	ARGENTINA/URUGUAY, TANZANIA	9C SOUTH CAROLINA SYNOD	COLOMBIA, JAPAN, TANZANIA
4B CENTRAL STATES SYNOD	PAPUA NEW GUINEA, RUSSIA	9D SOUTHEASTERN SYNOD	GERMANY, GUATEMALA, MALAYSIA, SINGAPORE
4C ARKANSAS-OKLAHOMA SYNOD	GREAT BRITAIN, TANZANIA	9E FLORIDA-BAHAMAS SYNOD	CUBA, GUYANA, HAITI, JAMAICA, SURINAME
4D NORTHERN TEXAS-NORTHERN LOUISIANA SYNOD	SIERRA LEONE	9F CARIBBEAN SYNOD	SOUTH AFRICA
4E SOUTHWESTERN TEXAS SYNOD	COSTA RICA		
4F TEXAS-LOUISIANA GULF COAST SYNOD	CENTRAL AFRICAN REPUBLIC, PERU		
5A METROPOLITAN CHICAGO SYNOD	SOUTH AFRICA		
5B NORTHERN ILLINOIS SYNOD	INDIA, TANZANIA		
5C CENTRAL/SOUTHERN ILLINOIS SYNOD	MADAGASCAR		
5D SOUTHEASTERN IOWA SYNOD	TANZANIA		
5E WESTERN IOWA SYNOD	CHILE, TANZANIA		
5F NORTHEASTERN IOWA SYNOD	HUNGARY, NAMIBIA		
5G NORTHERN GREAT LAKES SYNOD	TANZANIA		
5H NORTHWEST SYNOD OF WISCONSIN	MALAWI		
5I EAST-CENTRAL SYNOD OF WISCONSIN	SOUTH AFRICA		
5J GREATER MILWAUKEE SYNOD	EL SALVADOR, TANZANIA		
5K SOUTH-CENTRAL SYNOD OF WISCONSIN	INDIA		
5L LA CROSSE AREA SYNOD	CZECH REPUBLIC, PERU		
6A SOUTHEAST MICHIGAN SYNOD	JORDAN/PALESTINE, TANZANIA		
6B NORTH/WEST LOWER MICHIGAN SYNOD	HONDURAS, LATVIA, PAPUA NEW GUINEA		
6C INDIANA-KENTUCKY SYNOD	CHILE, INDONESIA		
6D NORTHWESTERN OHIO SYNOD	SERBIA, TANZANIA		

ELCIC SYNOD	INTERNATIONAL COMPANION
BRITISH COLUMBIA SYNOD	PERU
SYNOD OF ALBERTA AND THE TERRITORIES	COLOMBIA
SASKATCHEWAN SYNOD	ARGENTINA/URUGUAY
MANITOBA/NORTHWESTERN ONTARIO SYNOD	CAMEROON
EASTERN SYNOD	GUYANA, JORDAN/PALESTINE

GIVING CODES

Use these codes to designate a gift to a specific ministry or missionary* in the global church. Make your check out to "ELCA" with one of the designation names and codes in the memo line. Mail your check to: ELCA Gift Processing Center, P.O. Box 1809, Merrifield, VA 22116-8009.

MISSIONARIES

MISSIONARY NAME	COUNTRY OF SERVICE	GIVING CODE
Adachi, Rev. Hitoshi and Satoko	Japan	GCS2051
Aelabouni, Rev. Gabi and Rev. Meghan	Jerusalem	GCS2060
Anderson, Karen	Chile	MSG0676
Ariik, Rev. Mawien	South Sudan	GCS2010
Baker, Rev. Phillip	Cambodia	GCS2002
Ballenger, Carrie	Jerusalem	GCS2020
Bencke, Patrick and Jackie	Japan	MSG0021
Brondos, Rev. David and Alicia	Mexico	MSG0069
Brown Saavedra, Rev. Meghan	Mexico	GCS2041
Bryer, Erica	Japan	GCS2054
Buerkle, Rev. Bradn	Russia	MSG0075
Collins-Brown, Jordan	Japan	GCS2055
Courter, Rev. Zachary, and Rev. Rachel Eskesen	Hungary & Serbia	GCS2033
Crawford, Rev. Kim, and Rev. Henry Martinez	Australia	GCS2032
Deal, Rev. Stephen and Marta	Costa Rica	MSG0098
Dietrich, Rev. Viking and Marissa	Germany	GCS2050
Driau, Alberto (Gustavo)	Argentina	GCS2045
Engstrom, Rev. Kristin	Senegal	GCS2031
Friberg, Dr. Steven and Bethany	Tanzania	MSG0141
Hafar, Matthew	Hong Kong	GCS2063
Hill, Jessica	Japan	GCS2062
Jacobson, Dr. Mark and Linda	Tanzania	MSG0216
Jarvie, Jennifer	Japan	GCS2028
Johnson, Rev. Dr. Elisabeth	Cameroon	MSG0719
Knutson, Rev. Philip and Lou-Marie	South Africa, Republic of	MSG0245
LaChapelle, Rev. Alex	Kenya	GCS2043
Laderach, Rev. Kirsten	Madagascar	GCS2023
Langdji, Anne and Willie	Cameroon	MSG0260
Manisto, Rev. Christie and Steven Saari	Egypt	GCS2061
Martin, Rev. Chandran Paul	India	MSG0721
Mkhabela, Rev. Lancelot Themba and Kwena	Madagascar	MSG0707
Moore, Rev. Dr. Robert and Kathryn	Germany	GCS2036
Msseemmaa, David (Daudi) and Kellen	Tanzania	GCS2058
Narum Miyamoto, Katie	Japan	MSG0358
Neubauer, Rev. Janelle	Rwanda	GCS2044
Palmer, Rev. Brian	Liberia	MSG0688
Parker, Rev. Michael	Egypt	GCS2005
Pérez-Alvarez, Rev. Dr. Eliseo, and Dr. Regina Musselman de Pérez	Jamaica	GCS2030
Reat, Rev. Wal	South Sudan	GCS2026
Rich, Rev. Dr. Mark and Rev. Dr. Cynthia Holder Rich	Tanzania	GCS2047
Ringlaben, Rev. Rachel	Argentina & Uruguay	GCS2056
Ryan, Erin	Japan	GCS2053
Sack, Rev. Dr. James and Carol	Japan	MSG0462
Seyenkulo, Rev. Linda Johnson	Liberia	GCS2018

MISSIONARY NAME	COUNTRY OF SERVICE	GIVING CODE
Svenningsen, Rev. Kyle and Anna	Slovakia	GCS2059
Swanson, Dr. Stephen and Jodi	Tanzania	GCS2007
Troester, Rev. Deborah and Joseph	Zambia	MSG0620
Truscott, Rev. Dr. Jeffrey	Singapore	MSG0546
Wentland, Spencer	Japan	GCS2057
Wilson, Rev. Dr. Sarah and Dr. Andrew	Japan	GCS2052

YOUNG ADULTS IN GLOBAL MISSION 2019-2020 VOLUNTEERS

YAGM NAME	COUNTRY OF SERVICE	GIVING CODE
Barkley, Amelia	Mexico	GCS3529
Barkman, Kara	Mexico	GCS3530
Bommersbach, Bryce	Madagascar	GCS3521
Bracken, Deanna	Mexico	GCS3531
Breen, Sophie	Mexico	GCS3532
Carlson, Kristian	Madagascar	GCS3522
Corkery, Mary	Hungary & Serbia	GCS3506
Corliss, Maren	Hungary & Serbia	GCS3507
Croonquist, Zachary	Hungary & Serbia	GCS3508
David, Benjamin	Argentina & Uruguay	GCS3492
Drew, Cassidy	Mexico	GCS3533
Eastham, Anna (Ali)	Hungary & Serbia	GCS3509
Fox, Anna	United Kingdom	GCS3547
Freeman, Caitlin	United Kingdom	GCS3548
Froiland, Maddi	Jerusalem	GCS3514
Gaiser, Sarah	Jerusalem	GCS3515
Garza, Christopher and Courtney	Argentina & Uruguay	GCS3494
Geroux, Jessica	Argentina & Uruguay	GCS3495
Giordano, Brad	Madagascar	GCS3523
Hanson, Lee	United Kingdom	GCS3549
Henning, Sarah	Mexico	GCS3534
Hernandez, Kendra	Hungary & Serbia	GCS3510
Horan, Connor	Senegal	GCS3542
Housiaux, Katie	Mexico	GCS3535
Hynek, Marie	Rwanda	GCS3537
Kennedy, Macy	Australia	GCS3499
Kiel, Joseph	Australia	GCS3500
Knott, Adam	Hungary & Serbia	GCS3511
Kokkonen, Jayme	Madagascar	GCS3524
Koon, Kendall	Madagascar	GCS3525
Lawrence, Ryan	United Kingdom	GCS3550
Lillie, Bethany	Madagascar	GCS3526
Linthicum, Katie	Australia	GCS3501
Maier, Emma	Australia	GCS3502
Martin, Rebecca	Argentina & Uruguay	GCS3496
McCabe, Madison	United Kingdom	GCS3551
Mong, Megan	Jerusalem	GCS3517
Monsen, Lyndsay	Jerusalem	GCS3518

YAGM NAME	COUNTRY OF SERVICE	GIVING CODE
Mottonen, Frieda	Rwanda	GCS3538
Narum, Sydne	United Kingdom	GCS3553
Olson, Alexis	Madagascar	GCS3527
Overton, Nathan	Hungary & Serbia	GCS3512
Pritchett, Michael (Collins)	Senegal	GCS3543
Roby, Michelle	Mexico	GCS3536
Ronsberg, Emily	Rwanda	GCS3558
Schloesser-Becht, Nichole	United Kingdom	GCS3554
Shane, Emily	United Kingdom	GCS3555
Singh-Hueter, Cassandra	Argentina & Uruguay	GCS3497
Skare, Anna	Jerusalem	GCS3519
Slagle, Olivia	Jerusalem	GCS3520
Smallwood, Antionette	Rwanda	GCS3539
Steig, Alexis	Hungary & Serbia	GCS3513
Stenberg, Jackie	Rwanda	GCS3540
Theship-Rosales, Alex	Rwanda	GCS3541
Tjorhom, Ann Emilie	Argentina & Uruguay	GCS3498
Weaver, Sarah	Senegal	GCS3544
Williams, Charlie	Senegal	GCS3545
Williams, Michael	United Kingdom	GCS3557
Ziegelmaier, Kaitlyn	Senegal	GCS3546

OTHER IMPORTANT GIVING CODES

Missionary Sponsorship	GCS2000
Young Adults in Global Mission	GCS3000
Young Adults in Global Mission Endowment Fund	E272617
YAGM Argentina/Uruguay	GCS3001
YAGM Australia	GCS3491
YAGM Central Europe	GCS3002
YAGM Jerusalem/West Bank	GCS3003
YAGM Madagascar	GCS3004
YAGM Mexico	GCS3006
YAGM Nepal	GMG3001
YAGM Rwanda	GCS3076
YAGM Senegal	GCS3142
YAGM United Kingdom	GCS3008
International Women Leaders	GCS5000
International Women Leaders Endowment Fund	E272671

**This list includes only sponsorable missionaries. Any missionaries whose names are not on this list are not sponsorable at this time and the ELCA cannot accept funds designated for them.*



FOLLOW GLOBAL MISSION



ELCA Global Mission



@ELCAGM



@ELCAGlobalMission